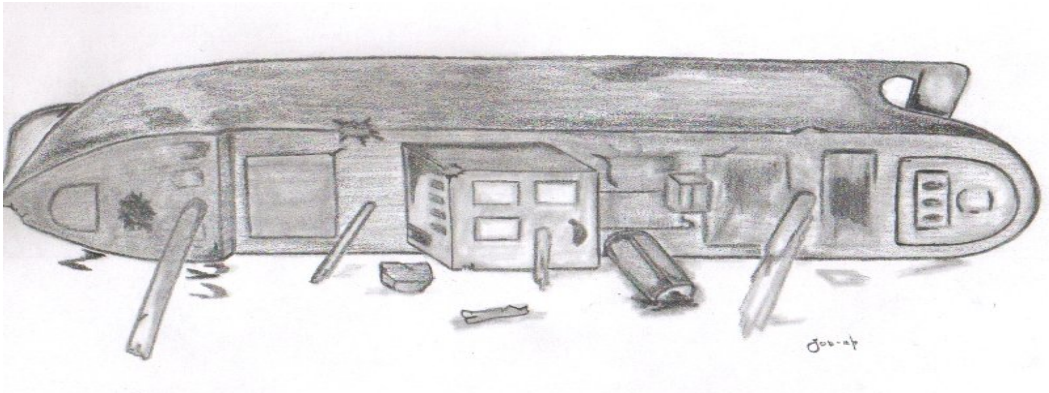


# El Capitan

Historical information on page 68

Type of site	Wreck
Depth range	5 to 21 meters
specialties	wreck
current	Generally calm
Length	90 meters
Rating	***

Normally referred to as the El Capitan *the USS Majaba* (AG-43) was built as SS *Meriden* by Albina Engine & Machine Works, Portland, Oreg., in 1919; acquired by the Navy under charter as SS *El Capitan* from her owner, E. K. Wood Lumber Co., of San Francisco, Calif., 23 April 1942; renamed *Majaba* and commissioned the same day. She was placed out of service 14 March 1946 at Subic Bay



*El Capitan/ USS Majaba Dive Site*

The wreck is situated near the inner channel marker of Ilanin Bay. A small freighter, the El Capitan lies on its port side with its stern in 5 meters while its bow rests in 20 meters. Starting the dive from 16 meters there's a nice swim through the accommodation area and one can expect to encounter the average tropical fish species of the shallows in this area. Visibility is 5-20 meters depending on tide. This is an excellent dive for all levels of divers.

### Dive levels

Novice and basic: At a depth of slightly over 18 meters the outside of the wreck provides an excellent site for divers. The forward hole is wide open allowing entry by even novice divers. The top side (starboard side) is at 5 meters with eliminates the need for a additional safety stop. This area is alive with a wide variety of fish.

Experienced, Advance/Wreck divers: from the forward hole, additional areas of the ship may be accessed. One route takes you to the accommodation area and on to rear cargo hold.